



Shire of East Pilbara Annual Report 2006/2007



CONTENTS

President's Report	3
Chief Executive Officer's Report	4
Your Shire	5
Shire of East Pilbara.....	5
History	5
Council Facts.....	5
Structure.....	5
Facts about your Councillors	6
Council Organisation	9
Sources and Applications of Operating Funds	10
Corporate Services.....	11
Human Resources.....	12
Financial Services	12
Library Services.....	12
Administration.....	13
Development and Regulatory Services	13
Community Services.....	17
Recreation Services	18
Aquatic Centres.....	19
Environmental Health	19
Technical Services	20
Airports.....	21
Statutory Reporting.....	23
Disability Services Report.....	23
National Competition Policy.....	23
Audited Financial Reports.....	24

PRESIDENT'S REPORT

The 2006-2007 year has seen much activity for the Shire of East Pilbara. With the resources boom running at a phenomenal rate, the Shire and in particular the town of Newman, has been strained in every aspect. The chronic shortage of housing throughout the Shire has resulted in much building activity to cope with the ever growing population. Along with extended population of course comes the need for expanding services throughout many of the Shire's venues and facilities.

Not the least of these was the need for more council staff and the office space to accommodate them. The building of the new council chambers was completed, together with public toilet facilities to be used for the Mulla Mulla markets and other events held at the council gardens. The chambers are now able to comfortably seat the entire council members and still allow room for the public to attend meetings. The space has also been well utilized in housing some of the magnificent art work done under the Martumili project.

The youth of Newman also benefited with the opening of our new Skate Park with thanks to Form and BHP Billiton and everyone else who contributed to this great project. Also with the support of the BHP Billiton-Shire of East Pilbara Sustainability Partnership shade sails were installed at our local parks, fencing around Boomerang Oval was completed, the gym at the Recreation Centre was extended and the upgrades to the town Aquatic Centre, including the children's wet play area and provision of the jumbo chess set have all been completed.

Likewise in our other towns, Nullagine has seen the completion of the lookout and the installation of equipment to broadcast Triple J.

Marble Bar has also had new radio broadcasting equipment installed to receive and transmit Triple J. The Marble Bar

Community Centre was completed which will benefit the youth of the town.

After many years of lobbying it was very satisfying to see the launch of the Next G mobile phone system in Marble Bar.

As in every other year significant resources were engaged to maintain our large road network which benefits all the communities in the Shire.

It is pleasing to see the continued growth in our region and to see many new companies looking to set up in our area. This will provide many more employment opportunities and may assist in making our towns more sustainable in the longer term. I believe that it is important for the Shire of East Pilbara to continue to embrace these great economic times and to use this opportunity to build upon our already great communities.

In closing I would like to take this opportunity to thank all the staff at the Shire and Councillors who have contributed so much over this past year and also to pass on my most sincere thanks to Allen Cooper, CEO, for his dedication and tireless efforts in working for the betterment of the entire Shire. I am looking forward to an even greater year in 2007-2008

Lynne Craigie
Shire President



CHIEF EXECUTIVE OFFICER'S REPORT

Welcome to the Annual Report of the Shire of East Pilbara for the Financial 1st July 2006 through to the 30th June 2007.

The year under review has been very challenging but very exciting due to the continued "boom" in the resource sector throughout the East Pilbara and the Pilbara region.

The challenge was to be both responsive and innovative in the way we operate and manage our resources (physical, financial and human).

Exciting, in that opportunities are continuing to develop with the increased population and the number of companies wishing to enter the region.

Council completed a telephone survey in November 2006 to seek feedback on various services provided and it was very pleasing to note that nearly all the services had a satisfaction rate of greater than 80%. Feedback received assisted Council in preparing the Plan for the Future of the District 2007 – 2010. Thank you to all who participated in the survey, your feedback was appreciated.

In these times of high employment and opportunities in the mining industry staff turnover continues to be an issue with nearly 60% of the staff being employed for less than three years. Council continues to seek innovative opportunities to retain staff.

On the back of the boom Newman Airport has seen a significant increase in passenger numbers, 1996 there was some 35,000 passengers using the airport now there are over 110,000 passengers per annum and increasing. This dramatic increase couple with the need for increased security measures imposed by the Federal Government has seen planning for significant change at the airport take place.

Already a new car park has been completed and the widening of the runway. The future will see a new apron and taxi way and a new terminal with the total redevelopment costing nearly \$20 million predominantly for airport income with some assistance from the State Government.

The year under review saw the commencement of the extension to the Light Industrial Area in Newman, which will assist in business opportunities in the area.

Major highlights of the year included:

- **PLANNING**
The 2006/07 financial year was a year of focusing and redirecting the Shires activities to improve services to ratepayers and the wider community.
- **SUSTAINABILITY PARTNERSHIP**
While signed in the 2005/06 financial year, 2006/07 saw the implementation of the sustainability partnership with the employment of a project officer and development of a range of ideas all directed at improving the facilities amenity of Newman
- **MARTUMILI**
The Shire, in partnership with the Martumili people, auspiced the development of the Martumili Artists organisation. A project co-ordinator was appointed and has worked on the development of the Martumili organisation.

I would also like to take this opportunity to acknowledge the support and commitment of all the Councillors and the Shire staff throughout the year.

Allen Cooper
Chief Executive Officer

YOUR SHIRE

The Shire of East Pilbara has produced this Annual Report as an open and honest disclosure to Residents and Landowners of the Shire of East Pilbara community.

The report contains specific information for the 2006/2007 financial year as well as reports required to meet our statutory obligations.

The Annual Report is presented to Council and residents at Council's Annual Electors Meeting as early as possible after the completion of the audit report.

Shire of East Pilbara

The Shire of East Pilbara is the largest Shire in the world and is located north of the Gascoyne area in Western Australia. It is made up of the townsites of Newman, Marble Bar, Nullagine and the Jigalong, Kiwirrkurra, Parngur, Punmu, Woodstock, Warralong and Kunawarritji Aboriginal Communities.

History

The Shire was formed by the amalgamation of the Shires of Marble Bar and Nullagine in 1972. In 1982 the town of Newman, which now is home to the main administration office of the Shire, was changed from a closed mining town to a "normalised" town.



Marble Bar was originally part of the Bamboo Road Board prior to the formation

of the Shires of Marble Bar and Nullagine and later East Pilbara. The Bamboo Road Board dates back to 1896. Council retains a sub office at Marble Bar and the works construction crew operates from that location. A small work force also operates at Nullagine.



The estimated population of the Shire is 10,000 with over 7,000 living in Newman. The Shire is rich in Aboriginal Culture, mining and pastoral activities and provides a significant part of the State and Federal wealth.

In July 1, 2004, the Shire Boundary was changed after Yandeyarra and associated lands were transferred to the Town of Port Hedland. However the Shire of East Pilbara still maintains its status of the largest Shire.

Council Facts

Distance from Perth (km)	1,220
Area (sq km)	371,746
Length of Sealed Roads (km)	162.2
Length of Unsealed Roads (km)	2708.9
Population	10,000
Number of Electors	4,584
Number of Dwellings	2,040
Total Rates Levied	\$3,966,277
Total Revenue	\$16,378,777
Number of Permanent Employees	66

Structure

In this Shire there are 11 Councillors representing 6 wards. Council appoints the Chief Executive Officer to control the day-to-day operations of the organisation.

FACTS ABOUT YOUR COUNCILLORS

An important function of the Council is to represent the population in discussions with Government and Industry. One of the aims of this process is to maximise the Council's share of grant funds.

A council's role is to:

- direct and control the local government's affairs;
- be responsible for the performance of the local government's functions;
- oversee the allocation of the local government's finances and resources; and
- determine the local government's policies.

A councillor's role is to:

- represent the interests of electors, ratepayers and residents;
- provide leadership and guidance to the community;
- facilitate communication between the community and the council and vice versa; and
- participate in decision-making processes at meetings.

South Ward



Cr Lynne Craigie
President
8 Selman Avenue
Newman WA 6753
Tel 9175 0823 Home
Tel: 9175 3661 Work
Fax: 9175 0974
Mob: 0427 174 919
Email:
wpcnew@benet.net.au
Term Expires: 2007

North West Ward



Cr Kevin Danks
PO Box 31
Marble Bar WA 6760
Tel: 9176 1024 Home
Term Expires: 2007

South Ward



Cr Bill Despotovski
53 Bondini Drive
Newman WA 6753
Tel: 9175 2807 Home
Mob: 0407 287 304
billdespo@bigpond.com
Term Expires: 2007

South Ward



Cr Anita Grace
PO Box 644
Newman WA 6753
Tel: 9175 1223 Home
Tel: 9175 1040 Work
Fax: 9175 0974
Term Expires: 2009

South Ward



Cr Doug Stead
17 Yanboomah Close
Newman WA 6753
Tel: 9175 1727 Hm
Tel: 9175 3665
Mob: 0439 388 150
Term Expires -2007

North Ward



Cr Lang Coppin
PO Box 805
Port Hedland WA 6721
Tel 9176 4954 Home
Fax 9176 4801
Yarrie.stn@bigpond.com
Term Expires: 2009

East Ward



Cr Melvin Farmer
Via Jigalong Aboriginal
Community
PMB 7
Newman WA 6753
Tel 9175 7437 (Hm)
Fax 9175 7648
Term Expires: 2009

Central Ward



Cr John Currell
Unit 3
APH
74 Francis Street
Marble Bar WA 6760
Tel 9176 1152 (Hm)
Term Expires: 2009

South Ward



Cr Jim Akesson
Lot 1568
Woodstock St
Newman WA 6753
Tel 9175 2598 (Wrk)
Mobile 0418 906 570
Term Expires: 2009

South Ward



Cr Shane Carter
2/57 Nimingarra Drive
Newman WA 6753
Tel: 9175 2908 Hm
Mob: 0417 172 343
Shaggy2@bigpond.com
Term Expires: 2009

Central Ward



Cr John Young
PO Box 5
Nullagine WA 6758
Ph / Fax: 9176 2110
Term Expires: 2007

Councillor's Meeting Attendance

	Jul-06	Aug-06	Sep-06	Oct-06	Nov-06	Dec-06	Jan-07	Feb-07	Mar-07	Apr-07	May-07	Jun-07		
Cr Lynne Craigie	Yes	Yes	Apology	Yes	No Meeting	Yes	No Meeting	Yes	Yes	Yes	Yes	Yes		
Cr Kevin Danks		Yes	Yes	Apology		Yes		Yes	Yes	Yes	Yes	Yes	Yes	
Cr Anita Grace	Yes	Leave of Absence	Yes	Yes		Yes		Yes	Yes	Apology	Yes	Yes	Yes	Apology
Cr Lang Coppin	Yes	Yes	Yes	Apology		Yes		Yes	Yes	Yes	Yes	Apology	Yes	Apology
Cr Melvin Farmer	Yes	Apology	Leave of Absence	Yes		Apology		Apology	Apology	Yes	Yes	Apology	Yes	Yes
Cr John Currell	Yes	Yes	Yes	Yes		Yes		Yes	Yes	Yes	Yes	Yes	Yes	Yes
Cr Shane Carter		Yes	Apology	Yes		Yes		Yes	Yes	Yes	Yes	Leave of Absence	Yes	Yes
Cr Jim Akesson	Yes	Yes	Yes	Yes		Yes		Yes	Yes	Yes	Yes	Yes	Yes	Yes
Cr Doug Stead	Yes	Leave of Absence	Yes	Yes		Yes		Yes	Yes	Leave of Absence	Yes	Yes	Yes	Yes
Cr Bill Despotovski	Yes	Yes	Yes	Yes		Yes		Yes	Yes	Yes	Yes	Yes	Yes	Leave of Absence
Cr John Young	Yes	Yes	Apology	Yes	Yes	Yes	Yes	Yes	Apology	Yes	Apology	Yes		

Councillor's meeting attendance for 10 meetings in the financial year are as follows:

Cr Lynne Craigie	9	Cr Melvin Farmer	5	Cr Doug Stead	8
Cr Kevin Danks	8	Cr John Currell	10	Cr Bill Despotovski	9
Cr Anita Grace	7	Cr Shane Carter	7	Cr John Young	7
Cr Lang Coppin	7	Cr Jim Akesson	10		

Council Organisation

The Shire of East Pilbara provides a variety of services and activities for the residents and ratepayers. Professional and dedicated staff are employed to provide and maintain these services.

The overall management of the Shire rests with the Chief Executive Officer. The staff acts on resolutions of Council by developing and putting into practice the policy development responsibility of the Councillors and their resolutions. The Shire has adopted a management structure of three Directorates, which are supported by three Directors under the responsibility of the Chief Executive Officer. Together they direct and co-ordinate the operations of the Shire.

Of the three tiers of Government which make decisions on behalf of the community, Local Government is the closest to the people they represent. Councils manage the things that affect your every day lifestyle - like roads, streets and footpaths, waste removal, recreation areas, parks & gardens, libraries, building regulations and so on. If you are unsure please contact us.

CHIEF EXECUTIVE OFFICER

Allen Cooper



Allen has been with the Shire of East Pilbara for over ten years. He was appointed as the Chief Executive Officer in 1998, having previously served as Council's Director Corporate Services for four years.

As the CEO Allen is responsible for the day-to-day operations of the Council and is fully accountable to elected members of Council.

DIRECTOR CORPORATE SERVICES

Peter Voros



Peter Voros joined the Shire in February 2000 and has over 20 years of Local Government experience.

Peter has a Diploma in Local Government (Clerk), a Bachelor of Business and is a Certified Practising Accountant. He is also Member of the Local Government Managers Association.

DIRECTOR TECHNICAL SERVICES

Alex Douglas



Alex commenced with the Shire of East Pilbara in 2003 when he moved from the Town of Bassendean.

Alex has been working in Local Government since 1981 and has worked at Melville, Boulder, Denmark, Narrogin and Subiaco.

He has an Associateship (Civil Engineering) WAIT.

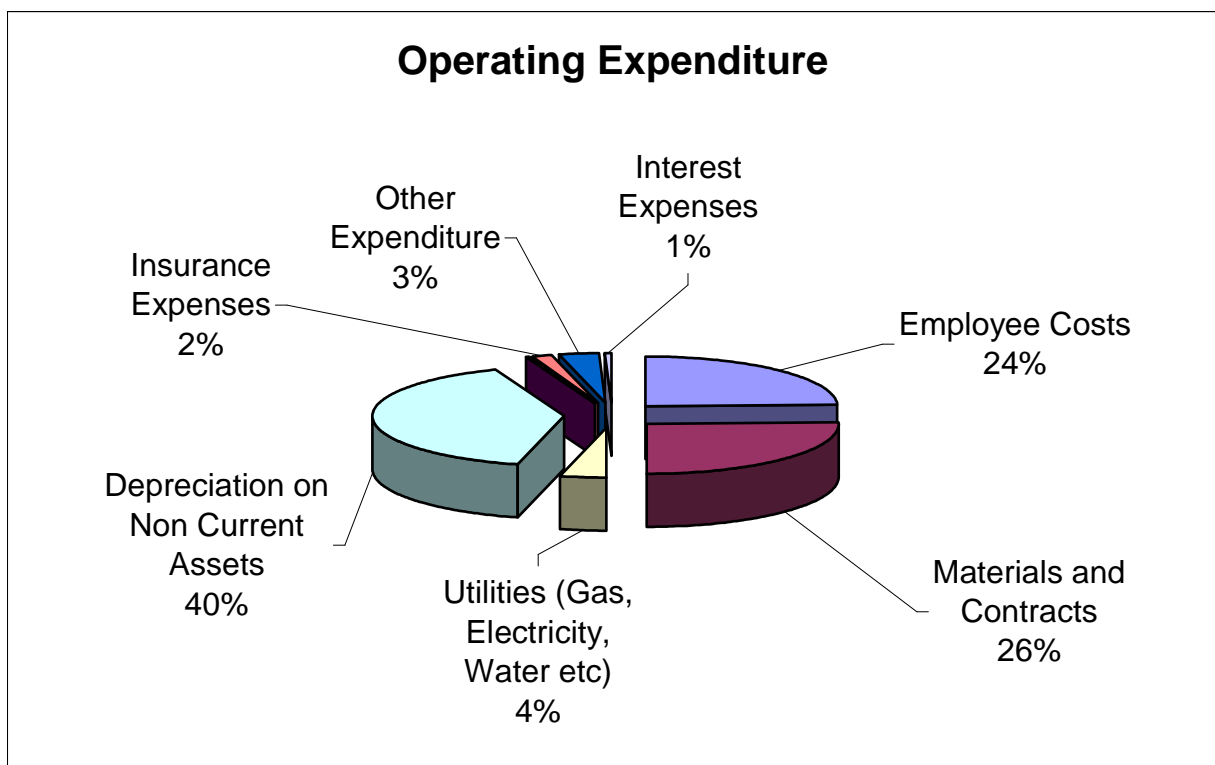
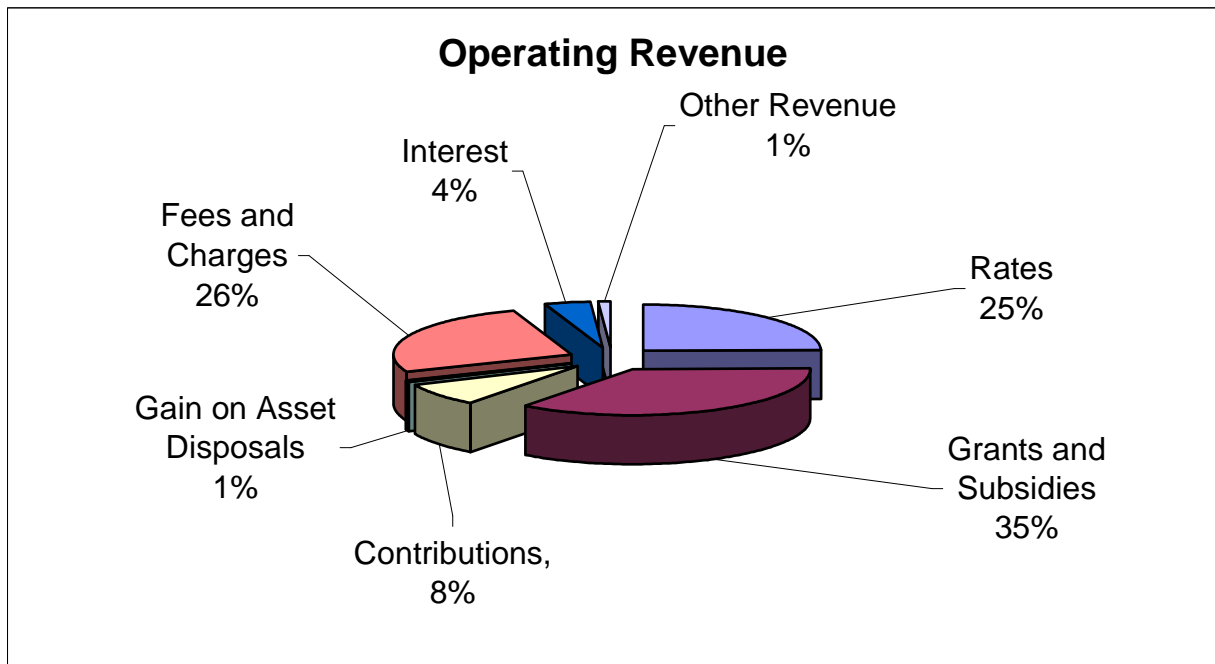
DIRECTOR COMMUNITY SERVICES

Bill Crerar



Bill has over 20 years experience in local government and moved to the Shire of East Pilbara from Armadale where he had worked as the Manager of Building Services.

SOURCES AND APPLICATIONS OF OPERATING FUNDS (EXCLUDING CAPITAL)



CORPORATE SERVICES



Human Resources

As at the 30th June 2007 Council had 59 permanent positions split as follows:

Administration Services:

CEO	1
Managers	1
Coordinators	1
Staff	2

Corporate Services:

Directors	1
Managers	1
Coordinators	2
Staff	8

Community/Building Services:

Directors	1
Managers	4
Coordinators	3
Staff	10

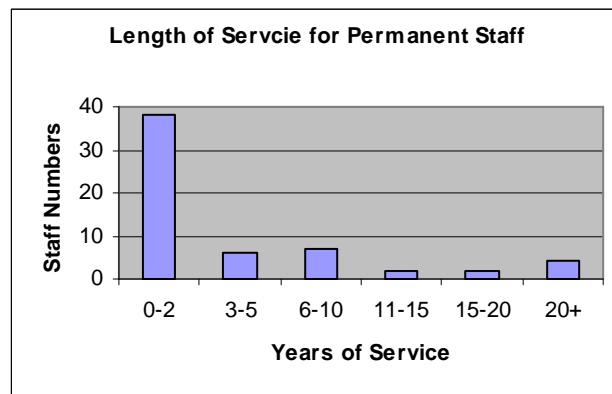
Technical Services:

Directors	1
Manager	2
Coordinators	0
Staff	22

Recruitment:

The following positions were vacant as at the 30th June 2007.

Mechanic
Ranger
Parks and Garden Crew Member Newman
Cost Clerk
Expense Finance Officer



Financial Services

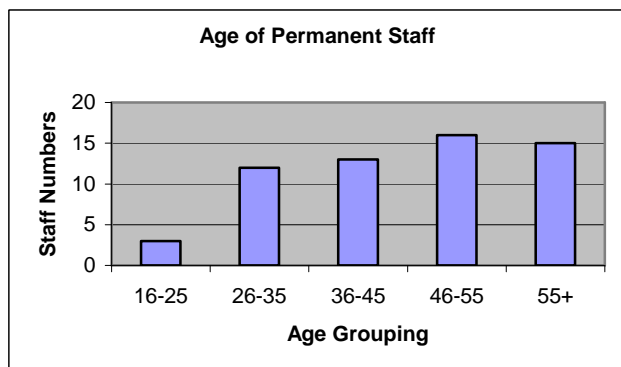
Rates

Council rates were increased by 3.5% in 2006/2007.

Rubbish rates were increased to \$215 per annum and sewerage rates remained the same.

Library Services

The Shire of East Pilbara operates two libraries at Nullagine and Marble Bar and financially contributes over \$100,000 to the Newman Library, which is a joint venture with TAFE.



Staff turnover for 2006/2007 financial year was 42% for permanent part time and full time positions.

Administration

The Shire is required each year to review its Policies, Delegations, Authorisations, Code of Conduct, Freedom of Information Policy along with all other manuals relating to Council procedures. This review was conducted with minor recommendations and adjustments.

A large effort was put into producing the Shire's Strategic Plan sending out information and collating the results.

Development and Regulatory Services

Newman Administration Office and Council Chamber



The Newman Administration Offices and Council Chambers were completed in February 2007.

The new administration offices accommodate the Finance Department with 8 new offices and a Records Room, the Council Chamber includes the Shire of East Pilbara Presidents Office, kitchen and teleconference area and Council Chambers.

Externally the area has been enclosed to incorporate an entertaining courtyard which has been brick paved and shade sails installed. Refurbishments have been made to the existing Administration Building to increase the number of offices with inclusion of a meeting room and consultant's office.

All offices have been refurbished with new office equipment and carpet.



New Council Houses

During 2007 the Shire of East Pilbara purchased a dwelling at 18 Knox Way, has contracted Wideglide for the construction of a duplex at 3 Warrambucca, Crescent, the construction of 2 houses at Lot 500, Wilara Street and Kurra Street, and the construction a house at the Newman Airport.

Council has also submitted an expression of interest for 4 lots of land in the new Landcorp subdivision, which is to be completed in 2008.

During the 2006/2007 several Council houses have been refurbished, with kitchen upgrades, new floor covering and painting.

- 1 Nyabalee
- 33 Nyablee
- 1 Koolyoo
- 39 Rudall
- 3 Ella
- 15 Brown
- 30 Yalberee



1 Koolyoo



New kitchen at 15 Brown

Council Properties

During 2006/2007 the Shire of East Pilbara have sold the following properties

- 214 Lynas Street was sold to East Pilbara Independence Support.
- 219 General Street
- Marble Bar Caravan Park

Leases

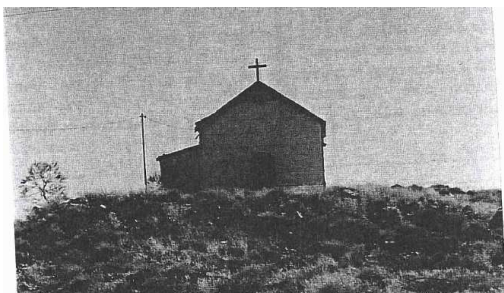
During the 2006/07 Council has updated outstanding leases with local Community and Sporting Organisations with the following

- Tigers Football Club
- Hillview Speedway
- Newman Mainstreet
- East Pilbara Independence Support
- State Emergency Services
- Newman Kart Club
- East Pilbara Racing Club
- Newman Kart Club

Marble Bar Heritage Trail

The Shire of East Pilbara with many partners (Lotterywest, Marble Bar Tourist Association, Pilbara Development Commission, Department of Transport and Regional Services) began the Marble Bar Heritage Trail. The trail journeys around the Marble Bar Township as well as surrounding areas. This is a tremendous facility for the community of Marble Bar and the tourists visiting the hottest place in Australia.

Signage and promotional material such as brochures and maps will be completed in December 2007, several information stand will provide history on the town, are accessible for disabled people.

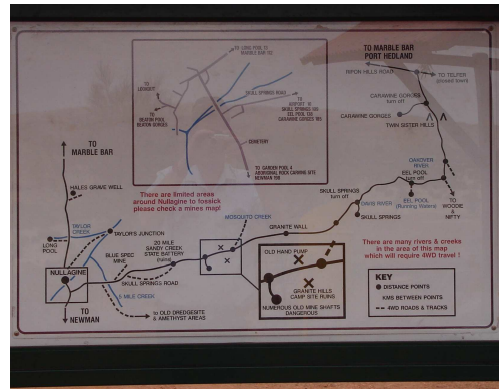


Display shelters have been incorporated on the Heritage Trail Walk which provides visitors with shelter whilst being provide with local history of the Marble Bar townsite.

Nullagine Lookout



The Nullagine Lookout has just been completed in October 2007, with the construction of picnic benches, bbq facilities, and information display of the local region showing water holes, the project was supported by the Pilbara Development Commission in conjunction with the Shire of East Pilbara.



Marble Bar Community Centre

The Marble Bar Community Centre is now complete and has been operating in Marble Bar for the past 12 months, funding provided by the Pilbara Development Commission has assisted the Council in providing air conditioning to this recreational facility for youth in Marble Bar.

Funding by Youthlinx is also assisting Council to provide Telstra Internet Access to the Centre which is due in December / January.

Building and Planning

In the 2006/07 financial year has been a busy year for Building and Planning.

The following building licence applications being approved to the value of \$137,086,449.95

- 191 - New Dwelling applications
- 108 – Extension, garages & pools etc
- 26 – Commercial & Industrial
- 91 - Demolitions

Due to the regional mining developments in the Pilbara and influx of people to the region the planning and building applications have increased dramatically due to the lack of housing and accommodation in the region.

Newman Aquatic Centre



The Newman Aquatic Centre upgrade is near completion with the construction of the new Water Playground being constructed and the new infant swimming pool, the Newman Aquatic Centre has additional shelter installed and new fencing between to 50 meter pool and the children's area to assist in the supervision, the plant has received.

Additional upgrading is in progress for the hydrotherapy spa is to be installed to assist people with disabilities with rehabilitation.

Funding for this project was received by the BHP Billiton and the Pilbara Development Commission.



Ranger and Emergency Management



SOEP is normally serviced by a Coordinator Ranger and Emergency Services and two Rangers.

Rangers continue to work towards compliance with various legislation using community contact, education and enforcement to achieve appropriate outcomes.

Animal control continues to take up a large percentage of their time. Rangers contribute to improving Aboriginal health through Community visits to treat animals for diseases and parasites which may impact on the community.

Local Community involvement with the Dog's Big Day Out and the Fortescue Festival, provided an information display and give aways promoted responsible pet ownership and the opportunity for information dissemination.

The CRES chairs the Local Emergency management Committee (LEMC). Regular meetings are starting to occur again as we move toward the Cyclone and Bushfire season. The management of all fires occurring outside a gazetted fire district is the responsibility of the SOEP unless they occur on private property where the SOEP may be called upon to assist in their extinguishment.

Nullagine BFB liaising with Local Police continues to provide strong EM leadership in the town and are developing them and incident response plans for the town and surrounding residents.

Rangers are involved in this process as they can provide a link and be used as liaison officer in the response phase of any incident and are a resource to be used in the recovery phase of an incident. SOEP is responsible for the recovery of its local communities after any incident. To this end Rangers will require further training in EM.

Records Management

The Shire of East Pilbara has commissioned the new Records Room, and continues monitoring record-keeping procedures. Records do not just happen, our Staff make a conscious decision to create them. The Shire provides guidance to its employees as to their respective record-keeping responsibilities. Training is also provided to assist staff in meeting these obligations.

Students from the local Schools undertaking work experience at the Shire of East Pilbara have gained valuable knowledge participating in Record Management. This experience will be of significant benefit for their future employment opportunities. The introduction of the new Records Room has proved to be invaluable allowing all files to be integrated and located in the one area. With the new user friendly files the Shire of East Pilbara strives to provide accurate records in compliance with the State Records Act 2000.



COMMUNITY SERVICES



Recreation Services

The Newman Recreation Centre is a facility that attracts a wide range of the community. The facility includes a Fitness Gym with membership that is continually growing. The Gym will be installed with the latest and new gym equipment by December 07. We have had around 6,800 participants through the doors of the gym this year and hope to expand on those numbers next year.

The qualified Les Mills fitness instructors are running a variety of classes, including Step, Pump, Combat and Balance.

The Centre has sporting competitions and activities for junior and seniors. Our Gymnastics group has a very large participation with several children competing at championships this year.

The adult and children's dance was very popular in terms 1 & 2 but unfortunately we have lost our instructor. Have advertised for any other instructors in town and remain hopeful.

Futsal casual soccer has been successful with many players dropping in for a game along with Badminton and casual court basketball. Our talented staff ran a holiday sporting week early in December and had over 30 children attend for the week of fun and sports.

The Centre has meeting rooms, sports courts and a variety of equipment also available for hire at competitive prices for individuals and groups.

The Newman Outside School Hours Care is a licensed programme catering for the needs of primary school children. The programme, which runs out of the Shire's crèche, was licensed for 26 children a day. Children were picked up from the two local schools; South Newman Primary School and Newman Primary School. As an integral part of the programme, healthy afternoon teas were provided to the children attending the service.

The Newman Outside Hours Care offered a diverse range of activities covering the Creative, Physical, Exploratory, Cognitive, Constructive, and Drama/Fantasy areas.

The Newman Creche also provided an Active after School Care programme three times a week that was funded by the Australian Sport Commission.

Additionally, a Vacation Care programme was offered during School Holidays. The programme was licensed for 39 children a day. Like after school care, the vacation care programme offered a diverse range of activities during the day. The programme operated between the hours of 8.00am and 4.30pm weekdays.

Crèche

The Shire of East Pilbara also operated a Crèche in the mornings for the classes being run out of the Recreation Centre. The creche operated Monday to Friday 8.30am to 11.30am and on Saturdays from 8.30am to 12pm.



Aquatic Centres

The Newman Aquatic Centre, together with the Newman Recreation Centre, remain the hub of sport and recreation activities within the town. Patronage at the Newman Aquatic Centre continues to be high, with a large percentage of the community making use of its facilities during the year. The Centre offered a range of activities during the season including swimming lessons, swim club, aqua fitness, school swim and survive days run by the Royal Life Saving Association, water play activities and inflatable activities. A highlight of the year was the Australia Day open day. A large percentage of the community took the opportunity to visit and use the facilities.

During the year, the swim school at the Newman Aquatic Centre was re-organised, the pool hours were changed to suit community usage, intensive staff training was undertaken and the upgrading of the Centre's facilities was commenced. When completed the upgrades will ensure that the Newman Aquatic Centre remains a high quality facility - one that matches the best within the Pilbara and the State.

During the year, the Shire of East Pilbara also managed the pool at Marble Bar. This facility, operated in conjunction with the Education Department offered the local community a limited range of activities, particularly focussed on the children within the town.

Community Events

During the 2006/2007 financial year the Shire of East Pilbara supported many local events including: Fortescue Festival, Policeman's Ball, Carol's by Candlelight, National Tree Planting Day just to name a few. Funding was also provided for events such as the Bloody Slow Cup and the Outback Drags and assisted in venues for the championships for the Gun and Swimming Clubs.

Environmental Health

There has been a significant growth in demand on the Shire's Environmental Health services this year. This has been in line with the growth of Newman and the proliferation of mining camps. These services include -

- The assessment, inspection and approval of on-site effluent disposal systems.
- A routine pool and drinking water sampling program.
- The inspection, testing and licensing of new swimming pools at mining camps and caravan parks.
- The routine sampling of the treated effluent water used to irrigate parks and gardens in Newman.
- Routine inspections of food premises and caravan parks throughout the Shire.
- The routine maintenance and testing of three flocks of sentinel chickens for Murray Valley Encephalitis.
- The investigation of Environmental Health complaints from residents.
- The management of the Ranger Services staff.

The next financial year is expected to see further growth in demand for Environmental Health services and changes to the Public Health & Food legislation.

TECHNICAL SERVICES



Airports

The 2006/07 financial year has seen some major changes, investment and growth at the Shire of East Pilbara's Newman Airport.

The resource growth in the region has contributed to a significant growth in passenger numbers passing through Newman. 106,040 passengers travelled in and out of Newman on RPT services in the 12 months to June 30 2007. The majority of these passengers travelled on the Qantaslink services, with a smaller number using the Skywest services that are open to the general public. It is important to note that these figures do not take into account the charter passengers that arrived and departed on other carriers. Projections on passenger growth indicate that, as Qantaslink add additional services, RPT passenger numbers can be expected to reach 140,000 during the next 12 months. The Passenger Service Charge has been extended to cover charter passengers from October 1, 2007.

With this growth in activity has seen significant capital investments and upgrades in airport facilities. Sealed shoulders were required to be constructed to accommodate the larger Boeing 717 aircraft from their introduction in August 2005. This project was undertaken and in addition the runway lighting was replaced with new equipment. At a cost of \$2.2 million to Council, this was completed in November 2006.

Council approved a concept plan for the design and construction of the new terminal building at Newman, which is planned for tender in November 2007. This will be sited to a new apron and taxiway with 2 jet parking bays to relieve congestion on the existing apron. Further, the tender for the reseal of the runway and existing apron and taxiway was called for in June 2007. RNR Contracting were the successful contractor and commenced works early in the 2007/08 financial year. These upgrades represent

approximately a further \$13 million in capital investment in critical infrastructure.

Further improvements undertaken during the period included the construction of new car rental facilities and offices for staff at the airport. This project was completed in June 2006 and also involved the removal of the existing transportable building used by Thrifty and Hertz. All of the car rental companies have undertaken extensions to their facilities. Budget and Avis have accepted office to increase the size of their existing yards. Thrifty commenced development of a 3000 square metre facility that will eventually house parking, wash bay and mechanic's facilities. Further developments planned include a Hertz yard to replace their existing townsite facility.

Air BP undertook an expansion of their Newman facility in September 2006 to create an area for the parking of their fuel truck. In addition an office and staff facilities were installed.

Landscaping of the access road with grass and the construction of a limestone walled entrance statement commenced in April 2007. This is shortly due to be completed and will significantly improve the entrance to the airport. Further paving, landscaping and fencing around the waiting area has been programmed and will be completed later in 2007.

New leases were developed with key airport tenants to replace previously expired agreements.

Council approved a new advertising policy in December 2006 that has formalised the arrangements and space available for advertising opportunities, both internal and external. Several local businesses have taken the opportunity to advertise at the airport to increase their exposure in the region.

Security changes continue to roll from the offices of power in Canberra. In May 2007, the Federal Government announced an expansion of the CBS (Checked Baggage Screening) programme to a further 26 regional airports, including Newman. This will be introduced in two stages from December 1, 2007 and makes the timing of the terminal building critical in that full X-Ray screening will be mandated from December 1, 2008. 100% funding of the equipment will be provided but the airport will have to fund the capital costs of infrastructure to house the equipment and the ongoing maintenance costs. Discussions have commenced with Qantas regarding recovery of these additional costs.

Looking forward to 2007/08, the growth and investment in Newman Airport will continue to underline it's importance as a key support in the rapidly growing activity in the Pilbara.

STATUTORY REPORTING

Disability Services Report

The Shire of East Pilbara has an ongoing commitment to the provision of services and access for people with disabilities. During the 2006/07 financial year, the Shire of East Pilbara has been developing a Disability Access and Inclusion Plan 2006 – 2010. The plan will provide:

- an outline of the functions, facilities and services provided by the Shire.
- An Access and Inclusion statement
- Strategies to improve Access and Inclusion
- An implementation plan

The plan will be presented to Council at the first meeting of 2007/08.

The commitment by the Shire of East Pilbara to improving facilities, as evidenced by the Disability Access and Inclusion Plan 2006 – 2010, will continue in the next financial year, with many projects planned.

National Competition Policy

The Shire of East Pilbara remains vigilant on competition policy and continues to monitor the introduction of Council policies and Local Laws which may be subject to anti-competitive practices

To date the Shire of East Pilbara has not received any complaints on anti-competitive practices within the Shire.

AUDITED FINANCIAL REPORTS

Shire of East Pilbara

Annual Financial Statements

For the Year Ended

30 June 2007



The Principal Office of the Shire is Located at:
Cnr Newman Drive & Kalgan Drive
NEWMAN WA 6753

Postal Address:
PMB 22
NEWMAN WA 6753