

BHP



Ophthalmia Dam Recreational Water use and risk



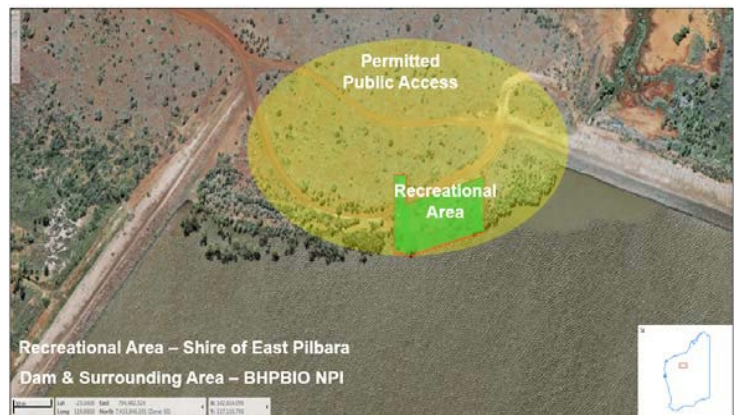
For your safety, please read this information before visiting Ophthalmia Dam.

Located 12km east of Newman, Ophthalmia Dam recreational area is a great location to have a picnic and enjoy the scenery. However, the dam is actually owned by BHP WAIO and is used as a part of its active mining operations.

Ophthalmia Dam is located in a public drinking water catchment and the underlying aquifer which Ophthalmia Dam recharges is utilised for the extraction of groundwater.

Managing the quality of the dam's water is a coordinated and ongoing effort between BHP WAIO, the Shire of East Pilbara and the Department of Health WA.

It is important that you read and follow the guidelines in this brochure to ensure your own health and safety associated with the recreational use of Ophthalmia Dam.



Common risks associated with Ophthalmia Dam:

Physical hazards

- Heavy rainfall and rapid increase in water flow and water levels
- Rips and currents
- Shallow water and submerged objects
- Uneven and slippery surfaces.

Contaminants and organisms

- Ophthalmia dam water is prone to contamination by a range of viruses, bacteria, toxic algae and other harmful microorganisms
- These water contaminants can cause harm to human health through either ingestion through the mouth or nose or contact with the skin
- Mosquitoes are common near the dam and may be carrying Ross River Virus or Murray Valley Encephalitis Virus which are harmful to humans



NO ACCESS to the water body is permitted.
The water body is strictly off limits.

Recreation within the picnic area is permitted with conditions.

For more information regarding the recreational area, please contact the East Pilbara Shire – (08) 9175 8000 or alternatively contact the BHP WAIO Community Response Line - 1800 421 077 for any matters involving the Dam and surrounding area.

If there is a risk of flooding, a broadcast message will be conveyed through the local radio network.

For your health and safety, please adhere to the following guidelines:

Permitted activities:

- Scenic appreciation (e.g. bird watching);
- Walking and picnicking within the permitted Public access areas.
- ✓ Always cover up with clothing and apply insect repellent;
- ✓ Always watch your footing on the uneven, unsealed areas.

Not permitted:

- Contact with the water body;
- Swimming;
- Surfing;
- Water Skiing;
- Diving;
- Fishing;
- Any form of boating;
- Kayaking / Canoeing;
- Camping;
- Alcohol Consumption

Please Observe all signs when visiting or accessing Ophthalmia Dam.

